

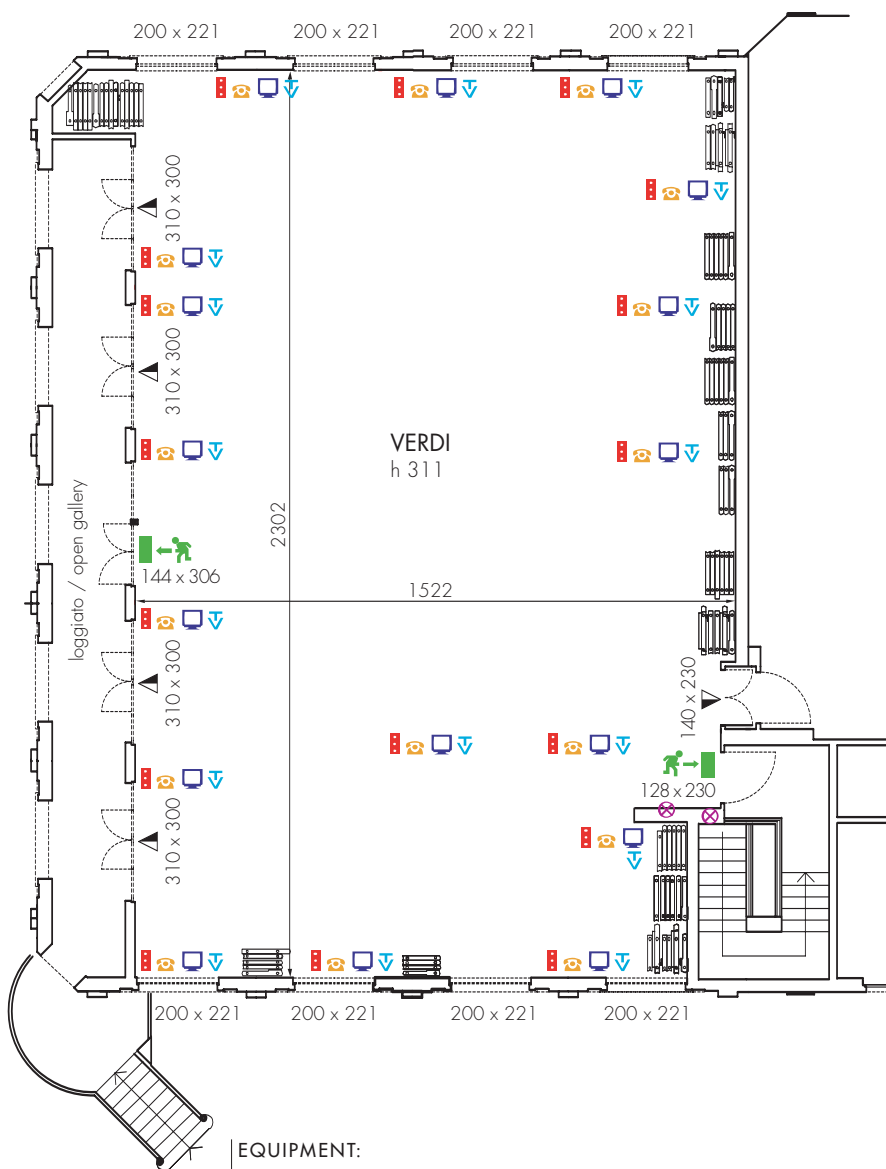


# Verdi sol. 1



	<b>m<sup>2</sup></b>			
920 OTELLO	344,56			
921 AIDA				
922 RIGOLETTO				
923 NABUCCO	MISURA SALA	TEATRO	B. DI SCUOLA	F. CAVALLO
924 TRAVIATA	ROOM SIZE	THEATRE	CLASS ROOM	U-SHAPE
925 LOMBARDI	15,22 x 23,02	320	250	65
926 STIFFELIO				
927 FALSTAFF				
928 ALZIRA				
4608 ERNANI				

- uscita sicurezza  
emergency exit
- telefono  
telephone
- computer  
pc
- prese elettriche  
electrical socket
- presa tv  
tv socket
- quadri elettrici  
switchboards



**DOTAZIONE:**

- |                                   |                                   |
|-----------------------------------|-----------------------------------|
| LAVAGNA FOGLI MOBILI              | BLOCK NOTES                       |
| LAVAGNA LUMINOSA                  | GIACETTE                          |
| TELEFONI                          | PANNO BLU                         |
| PODIO                             | SEDIE A RIBALTINA<br>SU RICHIESTA |
| PROIETTORE BEAMER<br>SU RICHIESTA | HOSPITALITY DESK                  |
| PENNE                             |                                   |

**EQUIPMENT:**

- |                      |   |
|----------------------|---|
| FLIP CHART           | PAPER                                   |
| OVERHEAD PROJECTOR   | ICE-BUCKET                              |
| TELEPHONE            | BLU BAIZE                               |
| LECTERN              | CHAIR WITH WRITING TABLET<br>ON REQUEST |
| BEAMER<br>ON REQUEST | HOSPITALITY DESK                        |
| PENS                 |   |

Regina Palace Hotel - 28838 Stresa - Italia

Tel. +39 0323 936936 - Fax +39 0323 936666 - [www.reginapalace.it](http://www.reginapalace.it) - [sales@reginapalace.it](mailto:sales@reginapalace.it)